

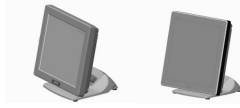
XT- 3015/3017/3215/3215I

Fanfree LCD Touch Terminal

User's Manual

Rev.: B0

POSIFLEX



FCC Notes:

This equipment generates, uses, and can radiate radio frequency energy and, if not installed and used in accordance with the instruction manual, may cause interference to radio communications. It has been tested and found to comply with limits for a Class A digital device pursuant to subpart B of Part 15 of FCC Rules, which are designed to provide reasonable protection against interference when operated in a commercial environment. Operation of this equipment in a residential area is likely to cause interference in which case the user at his own expense will be required to take whatever measures to correct the interference.

Warranty Limits:

Warranty terminates automatically when any person other than the authorized technicians opens the machine. The user should consult his/her dealer for the problem happening. Warranty voids if the user does not follow the instructions in application of this merchandise. The manufacturer is by no means responsible for any damage or hazard caused by improper application.

ENERGY STAR complied product:



ENERGY STAR is a joint program of the U.S. Environmental Protection Agency and the U.S. Department of Energy helping us all save money and protect the environment through energy efficient products and practices. Posiflex products with the ENERGY STAR logo comply with the ENERGY STAR standard, and the power management feature is enabled by default.

Please visit <http://www.energy.gov/powermanagement> for detail information on power management and its benefits to the environment. In addition, please visit <http://www.energystar.gov> for detail information on the ENERGY STAR joint program.

About This Manual:

Posiflex has made every effort for the accuracy of the content in this manual. However, Posiflex Technology, Inc. will assume no liability for any technical inaccuracies or editorial or other errors or omissions contained herein, nor for direct, indirect, incidental, consequential or otherwise damages, including without limitation loss of data or profits, resulting from the furnishing, performance, or use of this material. This information is provided "as is" and Posiflex Technology, Inc. expressly disclaims any warranties, expressed, implied or statutory, including without limitation implied warranties of merchantability or fitness for particular purpose, good title and against infringement. The information in this manual contains only essential hardware concerns for general user and is subject to change without notice. Posiflex Technology, Inc. reserves the right to alter product designs, layouts or drivers without notification. The system integrator shall provide applicative notices and arrangement for special options utilizing this product. The user may find the most up to date information of the hardware from: <http://www.posiflex.com> or <http://www.posiflex.com.tw> or <http://www.posiflexusa.com>. All data should be backed-up prior to the installation of any drive unit or storage peripheral. Posiflex will not be responsible for any loss of data resulting from the use, disuse or misuse of this or any other Posiflex product. All rights are strictly reserved. No part of this documentation may be reproduced, stored in a retrieval system, or transmitted in any form or by any means, electronic, mechanical, photocopying, or otherwise, without prior expressly written consent from Posiflex Technology, Inc. the publisher of this documentation.

© Copyright Posiflex Technology, Inc. 2014

P/N: 16640900030

All brand and product names and trademarks are the property of their respective holders.

ALERT TO OUR HONORABLE CUSTOMERS:

- Please always read thoroughly all the instructions and documents delivered with the product before you do anything about it. Don't take any premature action before you have a full understanding of the consequences.
- This product contains inside a Lithium battery. Please always follow local environmental protection laws / regulations for disposal of used batteries and always replace only with battery of same type.
- If you have an UPS battery installed in the product:
 - ✧ Temperature above **40°C must be strictly avoided** as it could cause termination of battery life and unexpected result even if the battery is not in work.
 - ✧ **Do not** power off the system just by shutting off the AC power leaving the battery supporting the whole system till completely exhausted. **Repeatedly using it up or improper maintenance reduces the battery life dramatically.**
 - ✧ Always fully recharge the UPS battery at least once every 3 months if the battery is not connected.
 - ✧ Always **disconnect the UPS battery** from the system if the system is to be left OFF for more than **72 hours** to prevent possible damage. Only connect the UPS battery back right before you are going to re-power on the system.
 - ✧ Replace the UPS battery as soon as the monitoring software indicates the battery is out of service. Attempt to recharge a dead battery is **dangerous!**
 - ✧ A separate battery monitor is not required for this series.

DAILY MAINTENANCE GUIDE

For regular cleaning of the XT system, please use only soft haired brush or dry soft cloth. You may use moist soft cloth to remove stains when necessary. Apply only proper amount of mild neutral detergent for obstinate stains. Please note that never use Acryl dissolving solvent or Polycarbonate dissolving solvent. You may apply ammonia-based glass cleaner only on the screen surface.

CAUTION

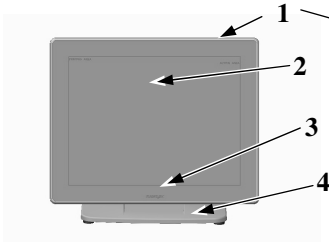
**Risk of Explosion If Battery Is Replaced By An Incorrect Type
Dispose Of Used Batteries According To Local Regulations**

INTRODUCTION

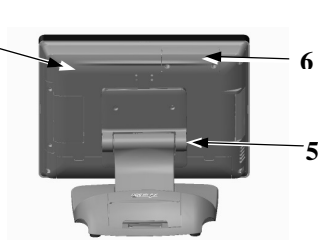
PRODUCT PICTURES FOR Gen 7/E&8/E BASE STAND

Gen 7 Base

Front View

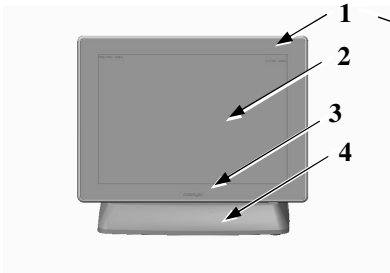


Rear View

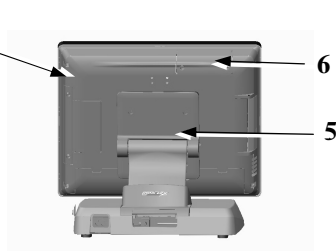


Gen 8 Base

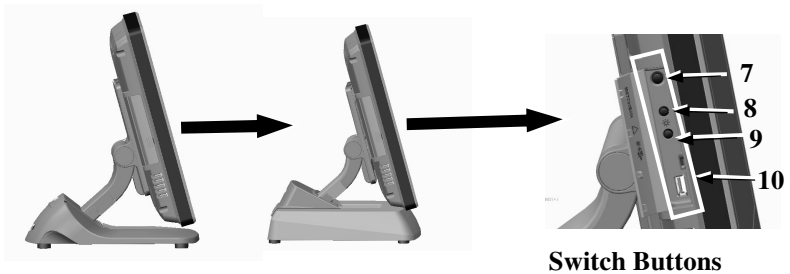
Front View



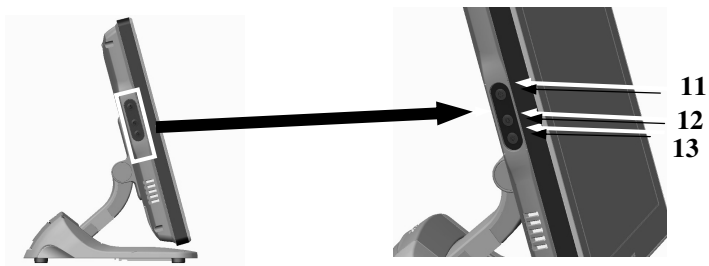
Rear View



Side View for XT-3015/3215/3215I



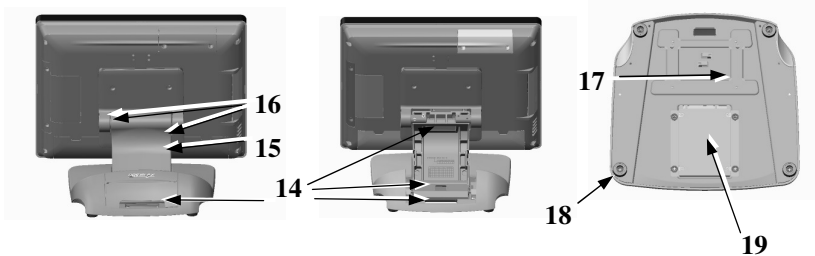
Side View for XT-3017



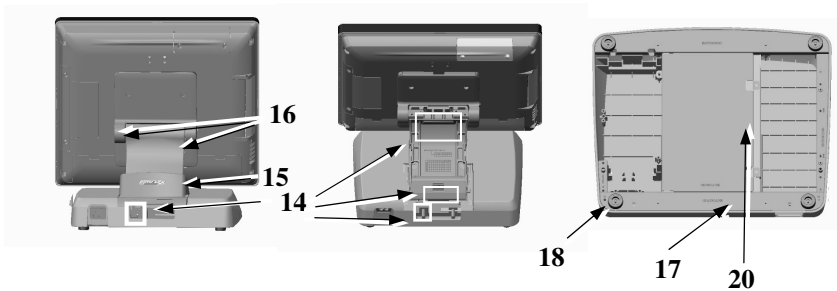
Switch Buttons

Base Stand and Bottom View

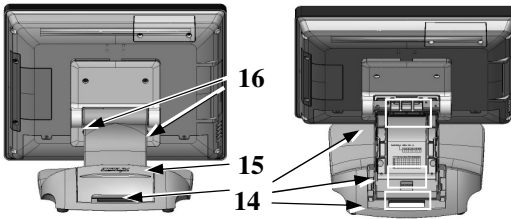
Gen 7 Base



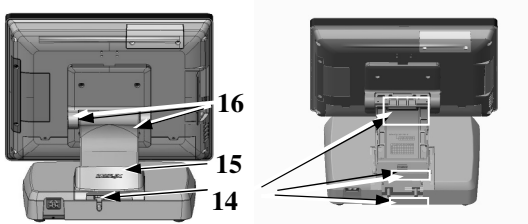
Gen 8 Base



Gen 7E Base



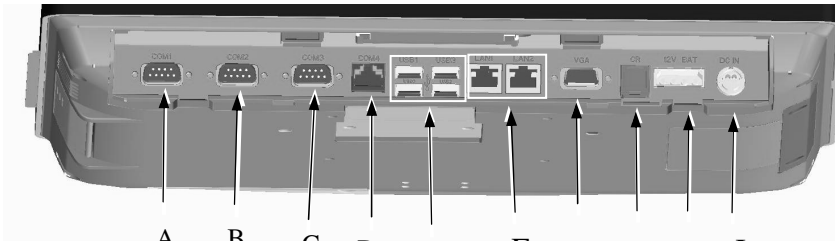
Gen 8E Base



PARTS IDENTIFICATION

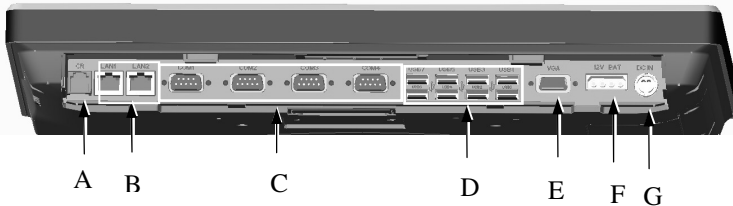
1. Main Unit
2. LCD touch panel
3. Power indicator
4. Gen 7 ,8 base stand
5. Hinge for LCD terminal
6. HDD cover
7. Power switch
8. Brightness adjust push button “+”
9. Brightness adjust push button “-”
10. USB port
11. Power switch
12. Brightness adjust push button “+”
13. Brightness adjust push button “-”
14. Cable exit
15. Base stand cover
16. Compression lock for base stand cover
17. Bottom plate
18. Rubber feet with bottom plate fixing screw
19. 2nd HDD cover
20. Base cover

I/O Plate View for XT-3015/3215/3215I



- A) COM1 (DB9) port
- B) COM2 (DB9) port
- C) COM3 (DB9) port
- D) COM4 (RJ50) port
- E) USB0~3 port
- F) LAN1~2 port
- G) VGA port
- H) CR port
- I) +12V UPS BAT port
- J) 1 x DC IN power connector

I/O Plate View for XT-3017



- A) CR port
- B) LAN1~2 port
- C) COM1~4 (DB9) port
- D) USB0~7 port
- E) VGA port
- F) +12V UPS BAT port
- G) 1 x DC IN power connector

INTRODUCING XT-3015/3017/3215/3215I

In today's retail and hospitality market, POS terminal is no longer just a cold and hard business tool. It is a part of the store decoration, a part of the store

image. Each curve and detail of the POS terminal should add something to the overall mood of the store, to lift the shopping experience of the customers.

With a bezel free/bezel type touch screen, beautifully sculptured slim body, sexily curved base stand, XT-3015/3017/3215/3215I series looks right at home at any elegantly decorated store. And more than just good looks, XT series also offers ample of performance and flexibility to satisfy the most demanding of daily POS operations.

Product Features

Standard Features

System

- CPU: Intel PineView D525 1.8G CPU, 1M Cache, Dual core.
- Chipset: ICH-8M.
- Data storage device: SATA storage x 2.
- Support POSReady 7/POSReady 2009/Win 7 / Windows Embedded 8.1 Industry/ Linux by request.
- Support high performance **DDR3 SDRAM** with maximum memory size 4GB in one SODIMM.

Mechanical Structure

- XT-3015/3017: bezel free P-cap touch panel.
XT-3215: bezel type resistive touch POS.
XT-3215I: bezel type IR touch POS.
- Fan free structure with aluminum die-cast main unit casing.
- An advanced slim base design that supports storage room for optional 2.5" HDD and optional UPS battery in Gen 8/8E base.
- Water resistant structure allowing easy cleaning.
- Easy maintenance construction.
Integrated structure for side mount upgrade kit: SA-105Z/SA-205Z/SA-305Z/SA-405Z.
Back mount display: LM/TM-3010F, LM/TM-3014F-3015F, PD-6607U/PD-350UE/2608UE.

Display

- High quality 15" /17" TFT active matrix LCD panel.
- LCD panel with easy tilt angle adjustment from 15° to 90°.

- LCD brightness adjust buttons at side of main unit.
- Durable resistive type touch panel, P-Cap, IR.
- Dual display support (per OS capability).
- VGA memory support DVMT 4.0.

I/O Interface

- 4 serial ports with 3 of DB9 connectors and one of 10 pin RJ50 type modular connector with XT-3015/3215/3215I, 4 serial ports with 4 of DB9 connectors with XT-3017. The COM1/2/3/4 connectors are supported with capability for +5V DC through BIOS setup and jumper.
- +12V DC power supply for COM 1/2/3/4 through jumper setting with XT-3015/3215/3215I/3017.
- XT-3015/3215/3215I: 5 standard USB ports with 1 at side, 4 in I/O area and 2 internal proprietary port for extension device
XT-3017: 8 standard USB ports on the I/O plate, 2 proprietary port for extension device.
- 2 LAN ports Ethernet 10/100/1000 Base T with LAN status indicators on jack (green for link, orange for data transmission).
- 1 external VGA monitor port with +12V DC support through BIOS setting.
- For XT-3015/3215/3215I, one internal SATA port for HDD in system; 1 SATA port with one 4 pin power connector at back side window for 2nd HDD at base stand; XT-3017 x 2 SATA ports in the system.
- LED indicators for systems operation status.
- 1 built-in internal 2W speaker.
- 1 CR port capable of controlling 2 cash drawers max.
- One 4 pin type DC 12 V power input connector.
- One 4 pin connector for optional UPS battery in Gen 8/8E base only.

Base

- **Gen 8/8E base inside installation:** including UPS battery, PoweredUSB board, HDD and 60W/80W/120W/150W power adaptor.

Optional Items:

Note: The underlined items in the following list means that option must be set prior to shipment from the factory. The rest of items can be set by the dealers.

- a) DDR3 SODIMM memory expansions up to 4GB max in one SO-DIMM.
- b) Integrated side mount upgrade kit:
 - ✧ SA-105Z: with optional MSR; Wi-Fi
 - ✧ SA-205Z: iButton
 - ✧ SA-305Z: 3 track MSR, RFID and Finger Print Sensor
 - ✧ SA-405Z: 3G, MSR and Finger Print Sensor
- c) Preload POSReady7 /POSReady2009/ Win 7 / Windows Embedded 8.1 Industry/ Linux by request.
- d) Parallel extension cable and 2nd HDD kit.
- e) Wireless LAN.
- f) RJ50 to DB9 serial port conversion cable/parallel cable.
- g) Split cable for 2 cash drawer control.
- h) WB-5000 wall mount bracket.

INSTALLATION GUIDES

CAUTION: Before any installation or cable connection to the set, please always make certain that the system is turned off and the external power source to the set is removed to prevent electric hazard! Never touch any metal pin in the connectors or circuits to avoid high voltage hazard or electrostatic discharge damage unless the operator is well grounded. Failure to do the above will void the product warranty!

CABLE ROUTING AND CABLE PASSAGE FROM BOTTOM For Gen 7/7E/8/8E Base

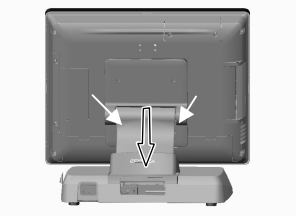
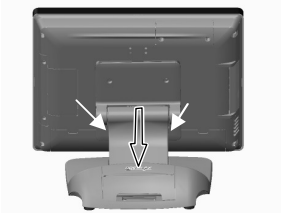
Note: Please ensure that the touch panel is tilted horizontally against the base stand then removing the I/O cable cover. After removal of the I/O cable cover, the connector area will be accessible then.

- 1) Please follow steps sequentially with reference to pictures below to route thru cable passage from bottom for Gen 7/8/7E/8E models.

Step A: Release the indicated base cover.



Step B: Release the compression lock of base stand cover at both sides to remove the base stand cover.



Step C: Route through the indicated passage from Gen 7/8 base.



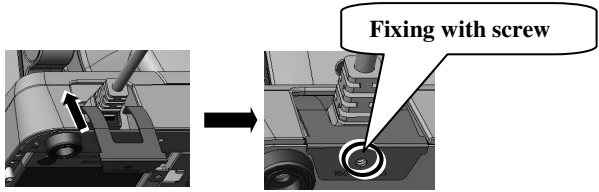
Securing the AC Power Cord for Gen 8/8E base

To avoid the AC power cord from being pulled out accidentally, the 80W/150W power adapter kits are shipped with a power cord bracket.



Step A: Install the power adapter kit and connect the power cord to the power adapter.

Step B: Use the power cord bracket to secure the power cord.



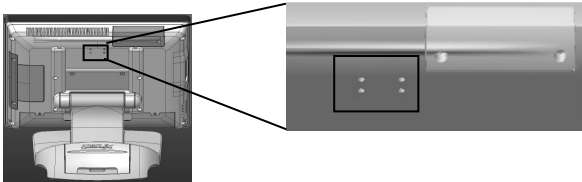
REAR MOUNT UPGRADE KIT

Please follow the instructions on the manual that comes along with the 2nd customer display LM/TM-3010F/3014F/3015F/LM-6607, PD-6607U/PD-350UE/PD-2608UE if installed.

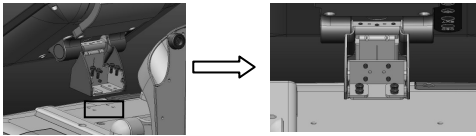
There are LM/TM-3010F/3014F/3015F/LM-6607 available for 2nd LCD display, needed to combine with XT-3015/3017/3215/3215I with supporting bracket to tighten.

1. For Second LCD Display with Gen 7/8 base

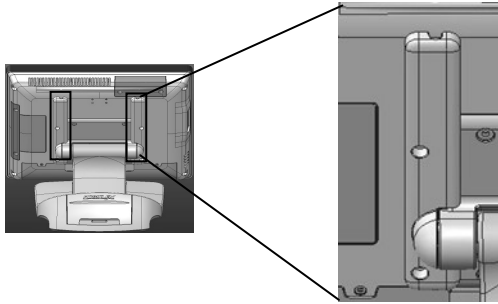
Step A: Please find the 4 holes on the back of the system.



Step B: Please take the 2nd LM/TM LCD display, aim its 4 holes and tighten the 4 screws to the system.



Step C: If 2nd LM display is ready for installation, release the cable cover at either side, route the VGA cable thru cable cover thru the cover. Then connect one end of the cable to the LM VGA port, connect the other end of the cable to the system VGA port. Finally put the cable cover back in place.

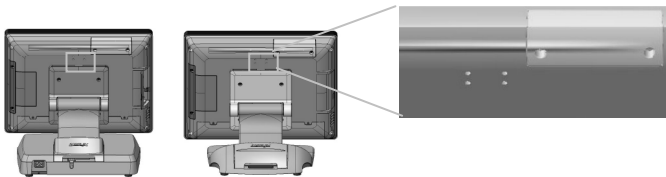


Step D: If 2nd TM display is ready for installation, release either cable cover for VGA cabling by unfastening the 2 screws on the cable cover, route one VGA cable thru cable cover. Then connect one end of the cable to the LM VGA port, connect the other end of the cable to the system VGA port. Upon completion, put the cable cover back in place by fastening the 2 screws to continue the other USB signal cabling.

For USB signal cabling, release the other cable cover by unfastening the 2 screws on the cable cover. Pass the USB signal cable thru the other cable cover. Connect one end of the USB cable to the USB port on the peripheral I/O plate, connect the other end of the cable to the system USB port. Upon completion, put the cable cover back in place by fastening the 2 screws.

2. For Second LCD Display with Gen 7E/8E base

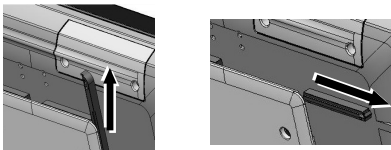
Step A: Please find the 4 holes on the back of the system.



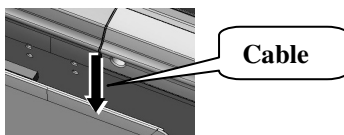
Step B: Please take the 2nd LM/TM LCD display, aim its 4 holes and tighten the 4 screws to the system.



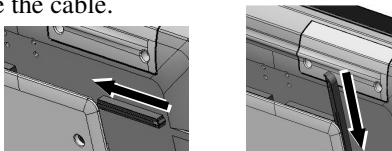
Step C: Push the lower right/left stopper (long) upward with your thumb to remove, and then push the upper right/left stopper (short) to the right/left with your thumb to remove.



Step D: Draw the VGA (USB) cable through the cavity between the rear side of terminal and the viewing-angle adjustment plate of base stand.



Step E: Push the upper right/left stopper (short) to the left/right with your thumb and then push the lower right/left (long) downwards with your thumb to secure the cable.



Step F: Please connect one VGA (USB) cable end to the LM/TM VGA (USB) port, the other end of cable to the system VGA (USB) port.

3. For Second Customer Line Display

There are also PD-6607U/PD-350UE/PD-2608UE available for 2nd customer line display. In the same manner, please follow the above steps for installation.

Note: Except for LM3010F, LM/TM-3014F kept with 60W, when XT-3015/3215/3215I series equipping with LM/TM-3015F series second LCD monitor, system power adaptor must be upgraded to 80W.

WB-5000 Wall Mount Bracket Kit

For more detailed information on securing XT-3017/3015/3215/3215I main unit on wall, please kindly refer to WB-5000 user guide for complete installation.

UPS Battery Installation Inside Gen 8/8E BASE:

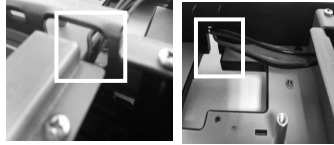
Inside Gen 8/8E base, UPS battery can be installed below:

Step A: Slide the UPS battery pack inside the cavity then tighten the indicated 2 screws included in the package at delivery.

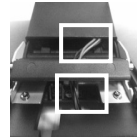


Step B: Route the UPS battery cable to the indicated passage of base stand

then connect at the power port end of the mother board.



Step C: For un-installation, go back to UPS battery installation procedure in its reverse way.



CONNECTING CASH DRAWER (OPTIONAL)

The CR connector in I/O area of a XT series system can be used for controlling most of Posiflex cash drawers available on the market. This cable has an 8-pin plug at one end and a 6-pin plug at the other. The 6-pin plug should be inserted into the connector of the POS system terminal. The 8-pin plug should be inserted in the connector of cash drawer.

OPERATING SYSTEM INSTALLATION

OS installation into a system without preloaded OS is highly discouraged. Posiflex Technology, Inc. shall not be responsible for any technical support to questions on this aspect.

APPLICATION ENVIRONMENT

It is **very** important that you check the following operational guidelines:

Ventilation

This terminal must **NOT** be operated in an environment with restricted

ventilation. There must be at least 25 mm air clearance around any top or side ventilation holes with a free flow of air around the unit at **ALL** times for the installation.

Operating Environment

The equipment must not be operated or stored in extremes of both temperature and humidity/moisture. (Operating range 0°C to 40°C and up to 80% humidity – non condensing, max. wet bulb 26°C)

POWER ON/OFF

Side Cover for XT-3015/3215/3215I

Please refer to the previous chapter **PRODUCT PICTURE** during this part in order to find out the buttons. A gentle tap on the side cover at left side of the main unit will open the cover and show the power switch at top area. It is preferable to keep this door closed through daily operation.

Power Indicator

For XT-3015/3017, there is a power indicator LED module serving for several purposes under the logo at center of lower rim of LCD panel.

The relationship between the indicator status and other conditions is summarized in following table:



Indicator Status	System Status	External Power	UPS Battery	Powering Up
Off	Off	Off	Not present	Not possible
Off	Off	Off	Present	Not allowed
Green	Off	On	No influence	Allowed
Blue	On	On	No influence	Not required
Blue/flash	On	Off	Activated	Not required
Green/rapid flash	On	Off	Running at low capacity	Not required

For XT-3215/3215I, there is also a power indicator LED indicator under the logo at center of lower rim of LCD panel as illustrated at the right.



The relationship between the indicator status and other conditions is summarized in following table:

Indicator Status	System Status	External Power	UPS Battery	Powering Up
Off	Off	Off	Not present	Not possible
Off	Off	Off	Present	Not allowed
Orange	Off	On	No influence	Allowed
Blue	On	On	No influence	Not required
Blue/flash	On	Off	Activated	Not required
Orange/rapid flash	On	Off	Running at low capacity	Not required

Hardware Power Switch

The power switch located in the left side of the main unit is a push on/off switch. This switch controls the power on/off of the system.

The power switch turns the system on when pushed during AC power available , and will turn the system off when pushed again while the system is powered on. However, if the system hangs for any reason, simply pushing the power switch for at least 10 seconds can power off the terminal.

If above action fails to shut down the terminal, please disconnect the UPS battery if installed and the AC power supply.

Note: There must always be at least 3 seconds waiting before switching on again once the system is powered off successfully.

Software Support Features

The XT series provides a software power off command for application program maneuvers. The XT also provides a specific means for the software to detect if the system is working on external or UPS battery power. Due to this feature, compatible software applications have the ability to change operating conditions when running on standard/backup power. The software programmer may take reference from the XT technical manual to apply such features.

Automatic Power on Control

The XT system may also turn on according to some preset conditions such as Alarm Clock Wake Up or LAN Wake Up.

To utilize Alarm Clock Wake Up function, the user should enter the BIOS setup by pressing “**F2**” key at system boot up, choose in “**Power**” and enable the “**Resume on Time**” for Alarm Clock Wake Up. Then enter the assigned

time frame. Finally press “**F10**” key to save the configuration and exit the BIOS setup program. The Preset Power On Control will then be ready.

For LAN wakeup, the item “PCI Express PM Function” must be enabled in “Power Management Setup” and an operating caller system connected through LAN to the system is required. It also requires a qualified networking technician to check the LAN chip ID of the system for the caller system to wake up.

When the XT system is turned off after a successful boot up, the preset automatic power on functions will keep monitoring for the preset conditions and turn on the system when the preset conditions are met.

Please note that if the XT system is improperly turned off before a complete boot up procedure, the above preset power on control functions will be disabled until next turning off after a complete boot up.

BRIGHTNESS CONTROL

In the left side of the main unit below the power switch, there are brightness adjust push button switches and one USB connector. Each single press on the + or – button changes the LCD panel display brightness by a small amount. When you press and hold the button the change will keep on until release or extreme condition matched. For those control buttons, please refer to the previous chapter.

DISPLAY ISSUES

Main LCD Display

For best viewing result, please set your display resolution at 1024 x 768 for 15” LCD; 1280 x 1024 for 17”. The system Video Memory is shared with system memory, and supports DVMT 4.0.

VGA Port

The VGA port in the XT-3015/3017/3215/3215I system supports either a separately connected LCD monitor or touch monitor. To support the DC power to the Posiflex LCD display, have a qualified technician to set the power supply in XT main unit through the VGA connector according to Posiflex technical information. **Do not connect other monitor to this port before the power in this port is disabled.**

SERIAL PORTS – COM1/2/3/4

In XT-3015/3215/3215I system, there are 3 serial ports in form of DB 9 pin male connectors and 1 in form of 10 pin RJ50 type modular connector available. In XT-3017 system, there are 4 serial ports in form of DB9 pin male connectors available. DB 9 serial ports can supply a +5 V and +12V DC after proper BIOS and jumper setup. **However, do not connect any other device to this port before the power in this port is disabled.**

PARALLEL PORT

In XT-3015/3017/3215/3215I system, the parallel port can be available only through use of the optional conversion cable. It should be connected to the special connector inside the service window as described earlier. The other end of the cable is the normal 25 pin D sub female LPT connector.

TOUCH PANEL

All paragraphs below are applicable for models with touch panel only. The user of those models without touch panel can ignore them and consider this user's manual ends here.

Touch Manager

Touch Terminal Manager for each type of touchscreen is available for user to set up touchscreen functions. If your system is preloaded with the OS of your choice, the chances are the Manager is already installed on your system. Nevertheless, you can also download the Manager from our website:



XT-3215 is a registered Energy Star model.